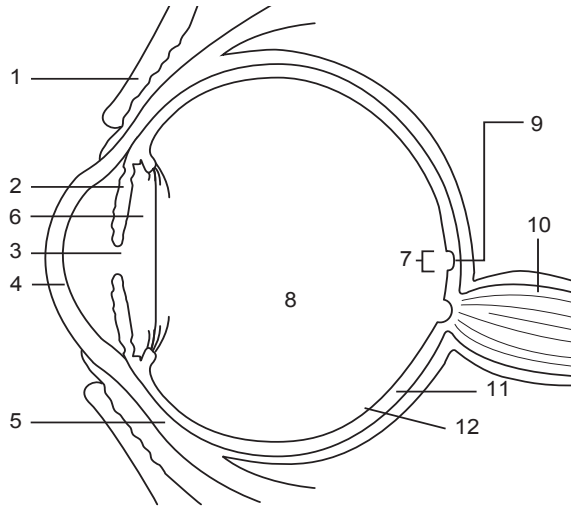


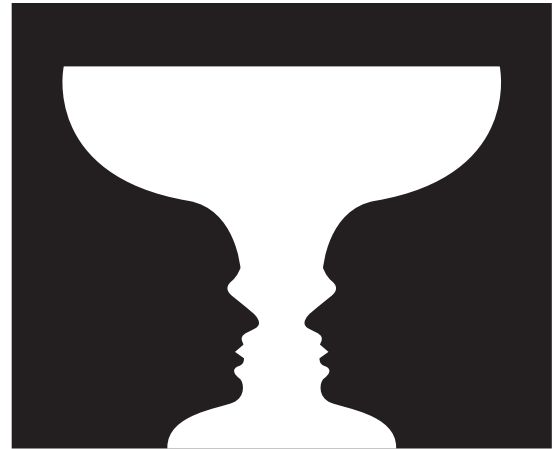
The Diagram of the Eye

Unscramble each part of the eye identified on the diagram.



- | | |
|-----------|-------------------|
| 1. dyelie | 7. aclamu |
| 2. siir | 8. stivorue mhuro |
| 3. lpuip | 9. ovafe |
| 4. onarce | 10. pocit verne |
| 5. rsleca | 11. drohcio |
| 6. nesl | 12. tranie |

An Optical Illusion



Is this a picture of a vase? Or two faces looking at each other? Do you see both?

Parts of the Eye

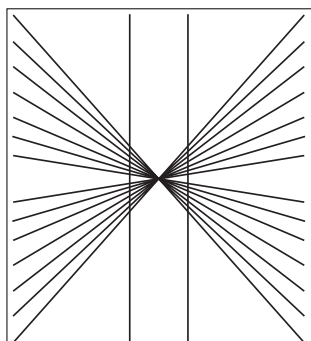
L P N L R E T I N E	macula
M U L E C V P A M L	eye
A P U E R C U E A M	cell
C I E E E V E I C L	iris
U L N V I N E L U I	nerve
A L E N S R S L L L	retina
C O R N E O I O A P	lens
L C O R N E A S E C	pupil
R E T I N A E Y E R	cornea
S E L C I L R M L I	

answers from reverse side

Sudoku

2	8	4	6	7	1	5	3	9
7	3	5	9	8	4	6	2	1
1	9	6	5	3	2	8	4	7
3	1	7	4	6	9	2	5	8
5	6	8	1	2	7	4	9	3
4	2	9	3	5	8	1	7	6
8	5	2	7	9	6	3	1	4
9	4	3	8	1	5	7	6	2
6	7	1	2	4	3	9	8	5

An Optical Illusion



Healthy Vision

A	L	B	S	P	E	V	I	T	A	M	I	N	A	
E	R	R	E	D	S	N	I	B	T	D	N	S	I	
M	E	I	S	I	E	I	A	I	L	A	M	C		
S	A	M	S	A	T	E	E	T	E	B	A	A	S	
P	W	M	A	B	E	V	A	V	E	A	G	E	X	L
A	E	E	L	E	I	C	D	E	B	E	M	E	T	
C	Y	D	G	T	D	T	Z	M	L	W	B	I	E	E
A	E	H	Y	E	D	A	D	I	A	A	G	A	E	E
I	V	A	T	S	E	M	R	B	N	Z	B	A	I	A
H	U	T	E	A	C	I	B	I	I	I	E	E	D	
D	A	S	F	D	N	T	E	A	A	I	R	E	L	A
S	D	R	A	Z	A	H	D	I	O	V	A	A	V	S
I	X	E	S	O	L	C	N	I	M	A	T	I	V	E
A	R	B	E	T	A	C	A	R	O	T	E	N	E	A
Z	D	W	S	O	B	S	T	Z	D	N	D	M	I	V